

Sailing Instructions

RYA Regional Championships 2021

420 Class Association – National

Plas Heli National Sailing Academy, Pwllheli, 25-26th September (Multi Class)

<https://welshsailingevents.org/welsh-sailing-events-home/welsh-regional-junior-championships-2021/>

The Organising Authority is the Royal Yachting Association (RYA) in association with the 420 class association.

1. Rules

- 1.1. The regatta will be governed by the rules as defined in *The Racing Rules of Sailing (RRS)*. Other documents under RRS definition: Rule (g) include:
 - (a) [DP] [NP] The Equipment Inspection Regulations (EIR)
 - (b) [DP] [NP] any requirements that need communicating to participants will be by the Organising Authority on the Official Notice which will be the WhatsApp Group in 3.1.
 - (c) RRS Appendix P, Special Procedures for Rule 42.
- 1.2. In all Rules governing this regatta:

[DP] denotes a rule for which the penalty is at the discretion of the Protest Committee.

[SP] denotes a rule for which a standard penalty may be applied by the Race Committee without a hearing or a discretionary penalty applied by the Protest Committee with a hearing (this changes RRS 63.1 and A5); and

[NP] denotes a rule that shall not be grounds for protests by a boat. This changes RRS 60.1(a).

2. Additional Identification [DP] [NP]

- 2.1. Boats may be required to display advertising chosen by the Organising Authority who will supply the stickers and instructions for their use.

3. Notice to Competitors

- 3.1. Notices to Competitors will be posted on the Official WhatsApp Group
<https://chat.whatsapp.com/KAOmz0ewBOd2Ctg1NpExSw>

4. Changes to Sailing Instructions

- 4.1. Assignment of course areas per class, expected time for display of flag D, and any change to the Sailing Instructions will be posted before 09:00 on the day they will take effect, except that any change to the schedule of races will be posted by 19:00 on the day before it will take effect.

5. Signals Made Ashore or Afloat

- 5.1. Signals made ashore will be displayed from the flag poles at the front of Plas Heli, next to the Bridge. When a signal is displayed over an area, class or fleet flag it applies to that area, class or fleet only.
- 5.2. When flag AP is displayed ashore, it means that the display of flag D on shore is postponed. Flag D will be displayed shortly after flag AP is removed. This changes Race Signal AP.
- 5.3. [DP] [NP] Flag D with a sound means: 'The warning signal will be made not less than 30 minutes, after flag D is displayed'.
- 5.4. Flag T with a sound means: 'Official Vessels may tow competitors to or from the race areas'. At the discretion of a Course Safety Leader (CSL) a retiring boat may be towed into shore, but not back out to the race area.

6. Format of Racing

6.1. Racing formats are as follows:

- (a) For all classes, the regatta will consist of a single series.

6.2. Fleet Assignments:

- a. 420 / 29er – Blue committee
- b. Championship fleet – Yellow committee
- c. Onboard / Regatta – White committee

7. Schedule of Races

7.1. Schedule of races as per Attachment C.

7.2. On the last scheduled day of racing for each class, no warning signal will be made after 15:00.

8. Class Flags

8.1. Class Flags will be the class insignia on a coloured or white background as detailed in Attachment C.

9. Racing Areas

9.1. Attachment A shows the intended location and names of the racing areas.

9.2. Attachment of classes to racing areas will be posted by 9am on the day they apply.

10. Courses

10.1. The diagrams in Attachment B show the courses, including the course signals, the approximate angles between legs, the order in which marks are to be passed, and the side on which each mark is to be left.

10.2. Course signals will be displayed on a board on the start line committee vessel.

10.3. No later than the warning signal, the start line committee vessel will display the approximate compass bearing of the first leg.

10.4. If one of two gate marks is missing and has not been replaced as described in RRS34, then the remaining mark shall be rounded to port. This changes RRS 34.

11. Marks

11.1. Marks 1, 2, 3S, 3P, 4S, 4P and 5 will be inflatable buoys, colour as detailed in Attachment C.

11.2. Starting marks will be a race committee vessel at the starboard end and a vessel or buoy with an orange flag at the port end.

11.3. Finishing marks will be a race committee vessel and a vessel or buoy with a blue flag.

12. The Start

12.1. The starting line will be between staffs displaying orange flags on the starting marks.

12.2. [DP] [NP] Boats whose warning signal has not been made shall avoid the starting area.

12.3. A boat starting later than 4 minutes after her starting signal will be scored Did Not Start. This changes RRS A4 and A5. The onBoard fleet is exempt from this.

13. Changes to the Next Leg of the Course

13.1. To change the next leg of the course, the Race Committee may lay a new mark (or move the finishing line) and remove the original mark as soon as practicable. When in a subsequent change a new mark is replaced, it will be replaced by an original mark.

13.2. Minor mark moves (up to approximately 100m) may be made by moving the existing mark, and without signalling the change. This changes RRS 33.

14. The Finish

- 14.1. The finishing line will be between staffs displaying blue flags on the finishing marks.
- 14.2. [DP] [NP] After finishing and clearing the finishing line, boats shall keep clear of the finishing area and of all boats not yet finished.
- 14.3. The Race Committee may give a score to any boat that is still racing by displaying flag W to her from an official vessel (which may be in motion) with two sounds. A boat's score in these circumstances will be the place she would have received had she sailed the course and finished within any time limit, without gaining or losing any place.

15. Penalty System

- 15.1. Appendix P will apply, except as changed by SI 15.1, 15.3 and 15.4.
- 15.2. Appendix P2.3 is deleted. P2.2 is changed to apply to the second and each subsequent penalty of a boat.
- 15.3. Appendix P3 Postponement, general recall or abandonment is deleted and replaced by:
If a boat has been penalised under RRS P1 and the Race Committee signals a postponement, general recall or abandonment, the penalty is cancelled and shall not be counted to determine the number of times she has been penalised during the regatta.

16. Time Limits & Target Times

- 16.1. Time limits and target times are as follows:

Class	Target Time	Mk 1 Time Limit	Time Limit	Finish Window
420	45 mins	25 mins	75 mins	15 mins
29er	30 mins	20 mins	50 mins	10 mins
Optimist	45 mins	25 mins	75 mins	15 mins
Tera	45 mins	25 mins	75 mins	15 mins
Topper	45 mins	25 mins	75 mins	15 mins
Mixed	45 mins	25 mins	75 mins	15 mins

- 16.2. If no boat has passed Mark 1 within the Mk 1 Time Limit or if no boat has finished within the Time limit the race will be abandoned.
- 16.3. Boats failing to finish within the applicable Finish Window stated in SI 16.1, after the first boat in their flight sails the course and finishes will be scored Did Not Finish without a hearing, unless SI 14.3 applies. This changes RRS 63.1, A4 and A5.

17. Protests & Requests for Redress

- 17.1. If competitors are intending to protest a fellow competitor or race committee, they shall inform the race committee or juror of their intention.
- 17.2. Hearing requests shall be submitted via paper application obtainable from Bridge.
- 17.3. For each class or fleet, the protest time limit is 60 minutes after the last boat has finished the last race of the day or the race committee signals no more racing today, whichever is later.
- 17.4. Notices will be posted within 30 minutes of the protest time limit to inform competitors of hearings in which they are parties or named as witnesses. Hearings may be scheduled to begin 30 minutes after the protest time limit for each class.
- 17.5. Lists of boats that have been penalized under Appendix P for breaking RRS 42, have been given a standard penalty by the Technical Committee or Race Committee, or have been disqualified by the protest committee will be posted.
- 17.6. Decisions of the protest committee will be final as provided in RRS 70.5(a), it being essential to determine promptly the results for selection to subsequent events.
- 17.7. Post-Race Penalty
- (a) A boat that may have broken a rule of Part 2 of the RRS or RRS 31, may, after finishing the race concerned and before the start of a related protest hearing, notify the race committee that she accepts a Post Race Penalty – a 30% scoring penalty calculated as stated in RRS 44.3(c), except that the minimum penalty is three places and she shall not be scored worse than the number of boats that came to the starting area. However, if the boat caused injury or serious damage, or, despite taking a penalty, gained a significant advantage in the race or series by her breach her penalty shall be to retire.
 - (b) When a post-race penalty is accepted:
 - (i) Neither the boat nor a protest committee may then revoke or remove the penalty.
 - (ii) The boat shall not be penalised further in a protest hearing when the protest committee decides that it was appropriate to the facts found and the applicable rules.
- 17.8. RYA Arbitration
- (a) When a protest is lodged, a boat may at the same time request RYA Arbitration, or a member of the protest committee may offer it.
 - (b) If the parties and a member of the protest committee agree that RYA Arbitration is suitable, an Arbitrator (who may be that member of the protest committee) will call an Arbitration Hearing. When it is the Arbitrator's opinion that a boat that is a party to the Arbitration Hearing has broken a rule for which the Post Race Penalty is available, the party will be invited to accept that penalty and, if accepted, the protesting boat will be allowed to withdraw the protest, changing RRS 63.1.
 - (c) When there is not an agreement to use RYA Arbitration or when, after RYA Arbitration, a protest is not withdrawn or the Post Race Penalty is not applicable to the facts, there will be a normal protest hearing at which the Arbitrator may be a member of the protest committee. RRS 66 and 70 (reopening and appeal) do not apply to an arbitration since this is not a protest committee decision or procedure. A boat may still accept a Post Race Penalty at any time before the start of a protest hearing and receive its protection from further penalisation. She may also retire.

18. Scoring

- 18.1. Scoring for all fleets except the regatta OnBoard fleet are as follows
- (a) 4 races are required to be completed to constitute a series.
 - (b) When fewer than 4 races have been completed, a boat's series score will be the total of her racescores.
 - (c) When 4 or more races have been completed, a boat's series score will be the total of her race scores excluding her worst score.
- 18.2. To request correction of an alleged error in posted race or series results, a boat may complete a Scoring Enquiry form obtainable from Bridge.

19. Safety Regulations [DP] [NP] [SP]

- 19.1. The Organising Authority will not be providing safety cover before Saturday 25th September.
- 19.2. Check-out and check-in. The requirements of this instruction are specified for the safety of competitors.
- (a) The tally control point to check-out and check-in competitors will be located at the top of the

entrance to beach for each classes.

- (b) Tallies comprise of numbered rubber wristbands. Numbers will be allocated at registration, and posted on the official notice board. Tallies shall be worn visibly, over clothing, on the right wrist by both helm and crew at all times while afloat.
- (c) Both helm and crew shall individually check-out before racing by personally collecting their tally.
- (d) Both helm and crew shall individually check-in immediately on returning to shore after racing, but no later than the protest time limit, by returning the tally personally to tally control.
- (e) The penalty for failure to comply with this instruction will be 5 points added to the boat's series score for each infringement without a hearing. A list of boats that have infringed will be posted on the official notice board within 20 minutes after the protest time limit. This changes rule A5.

19.3. A boat that retires from a race shall notify the race committee as soon as possible.

19.4. Boats wishing to sail ashore before the end of the day's racing shall not do so unless authorised by the Course Safety Leader (CSL). The CSL will instruct boats in the procedure for returning ashore.

19.5. Boats shall follow the instructions of Official Vessels. Infringements will be reported to the race committee, which may protest the boat. Boats penalised under this instruction may be scored DNE, or such other penalty that the protest committee may decide.

20. Replacement of Crew or Equipment [DP] [NP]

20.1. Substitution of competitors will not be allowed without prior written approval of the race committee. Requests for substitution shall be submitted via the Substitution form available from Bridge.

21. Equipment & Measurement Checks

21.1. A boat or equipment may be inspected at any time for compliance with the class rules and sailing instructions. On the water or ashore, a boat can be instructed by the Race Committee to proceed immediately to a designated area for inspection.

21.2. [DP] [NP] A boat shall comply with any reasonable request made by the Race Committee.

21.3. The details of the Race Committee will be posted on the Official Notice Board.

22. Official Vessels

22.1. Official vessels may be marked as follows:

Vessel	Flag
Protest Committee Vessels	JURY
Race Committee Vessels	Class Colour Flag
Safety Vessels	Class Colour flag with number
Food/Spare Gear Vessels	FOOD
Media/Photographer	MEDIA
PRO	RYA
All other Official Vessels	RYA

23. Safety Vessels [DP] [NP]

23.1. Except as provided in SI 22.2 and 22.3, team leaders, coaches, safety vessels, safety personnel, and anyone associated with a competitor shall stay outside areas where boats are racing, and shall not communicate with competitors at any time while afloat, unless attending a boat in distress requiring assistance, or as directed by the race committee.

24. Trash Disposal [DP] [NP]

24.1. As sailors, we seek to protect and restore our oceans and coastal waters. Trash may be placed aboard safety and race committee vessels.

25. Berthing [DP] [NP]

25.1. Boats ashore shall be kept in the boat park unless otherwise permitted by SI 5.3, from 1800 on the day prior to their first scheduled race until the end of their event. Boats may only be removed with the permission of the Organising Authority.

26. Radio Communication [DP] [NP]

26.1. A boat shall neither make radio transmissions while racing nor receive radio communications not available to all boats. This restriction includes mobile telephones.

27. Prizes

27.1. Prizes will be determined at the event.

28. Risk Statement

RRS 3 of the Racing Rules of Sailing states: "The responsibility for a boat's decision to participate in a race or to continue racing is hers alone."

Sailing is by its nature an unpredictable sport and therefore involves an element of risk. By taking part in the event, each competitor agrees and acknowledges that:

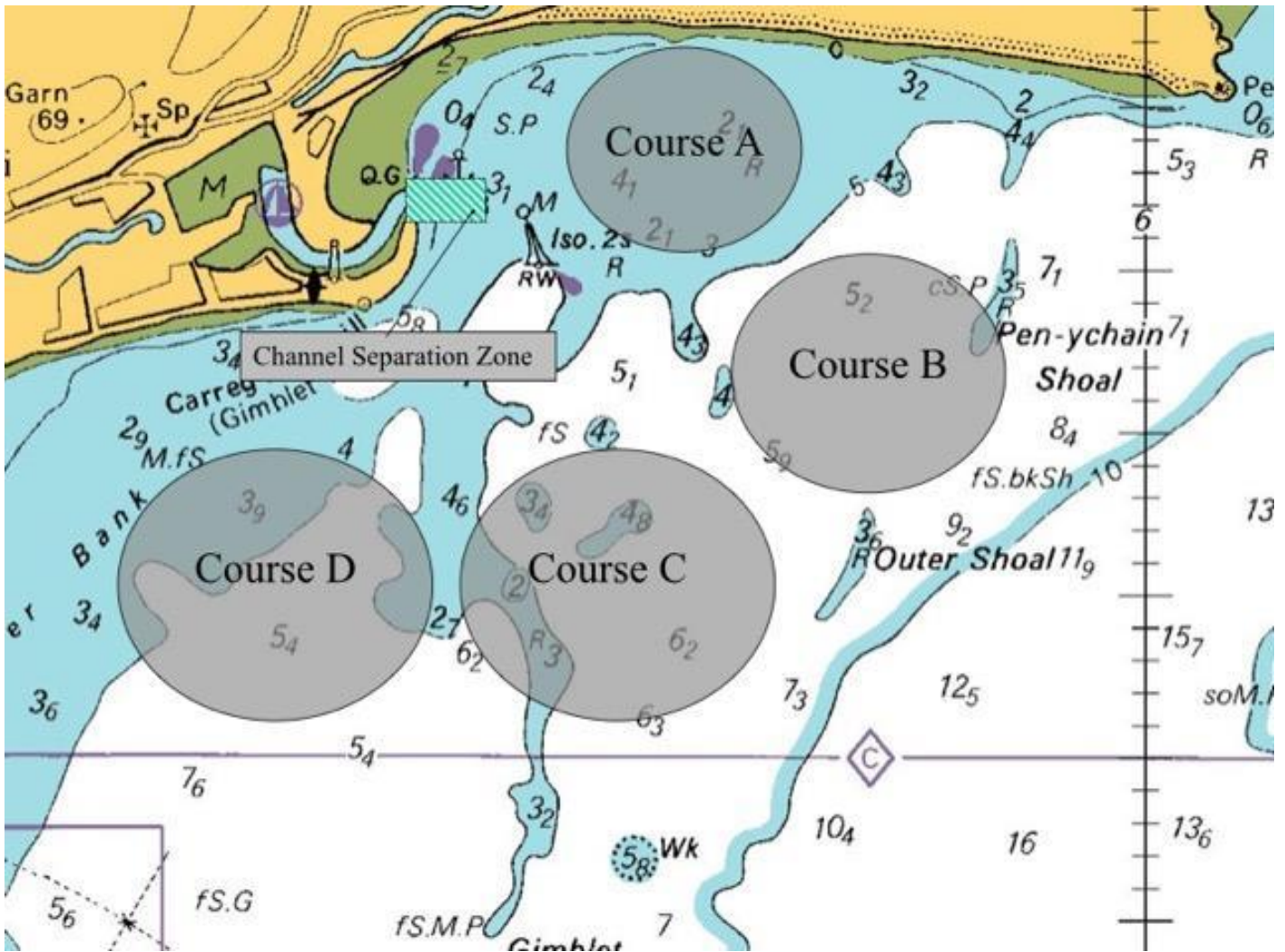
- a) They are aware of the inherent element of risk involved in the sport and accept responsibility for the exposure of themselves, their crew and their boat to such inherent risk whilst taking part in the event;
- b) They are responsible for the safety of themselves, their crew, their boat and their other property whether afloat or ashore;
- c) They accept responsibility for any injury, damage or loss to the extent caused by their own actions or omissions;
- d) Their boat is in good order, equipped to sail in the event and they are fit to participate;
- e) The provision of a race management team, safety vessels, umpires and other officials and volunteers by the organiser does not relieve them of their own responsibilities;
- f) The provision of safety vessel cover is limited to such assistance, particularly in extreme weather conditions, as can be practically provided in the circumstances;
- g) It is their responsibility to familiarise themselves with any risks specific to this venue or this event drawn to their attention in any rules and information produced for the venue or event and to attend any competitor briefing held at the venue;

29. Insurance [DP] [NP]

29.1. Each participating boat shall be insured with valid third-party liability insurance with a minimum cover of £3 million per event or the equivalent.

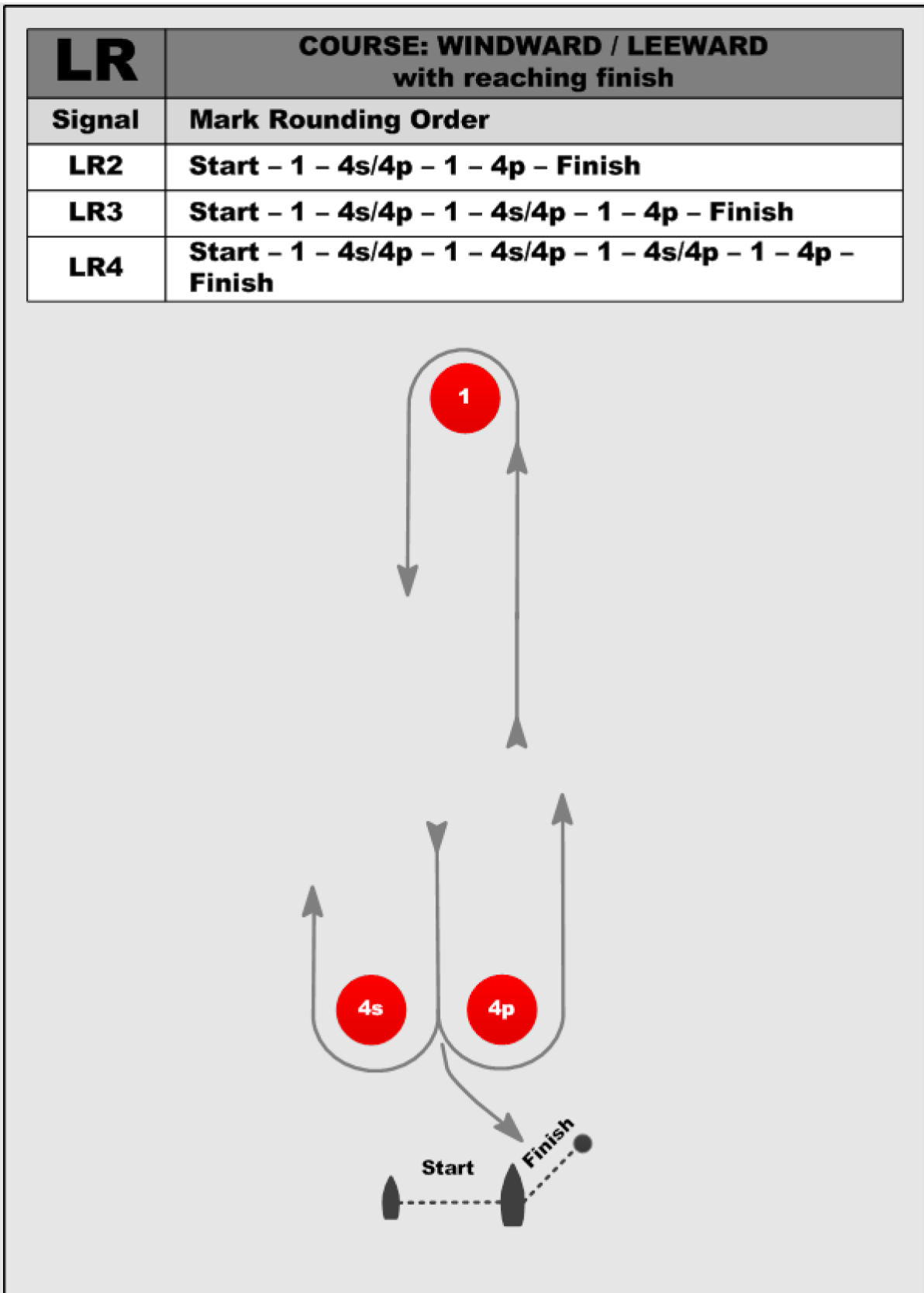
Attachment A

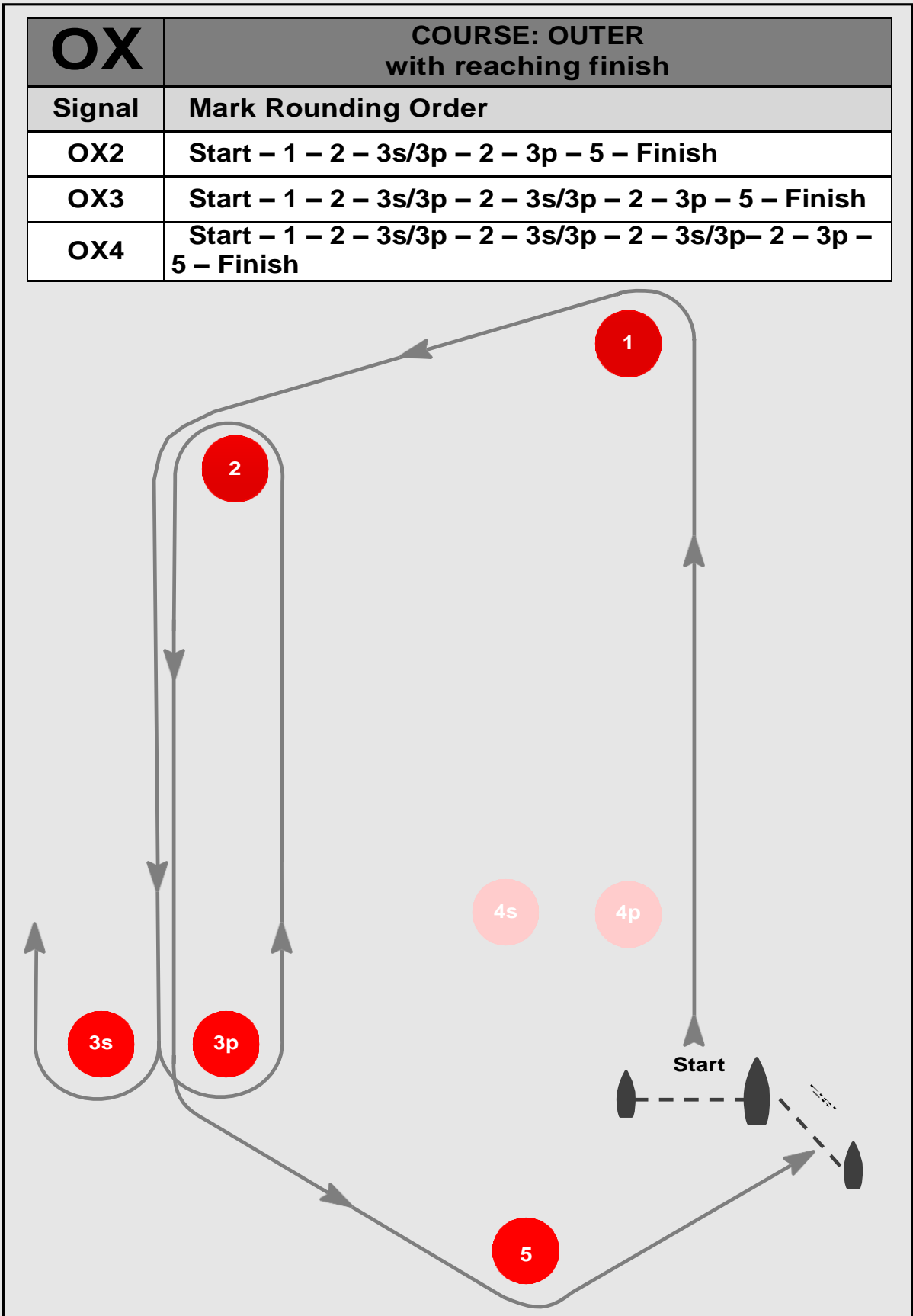
Racing Areas

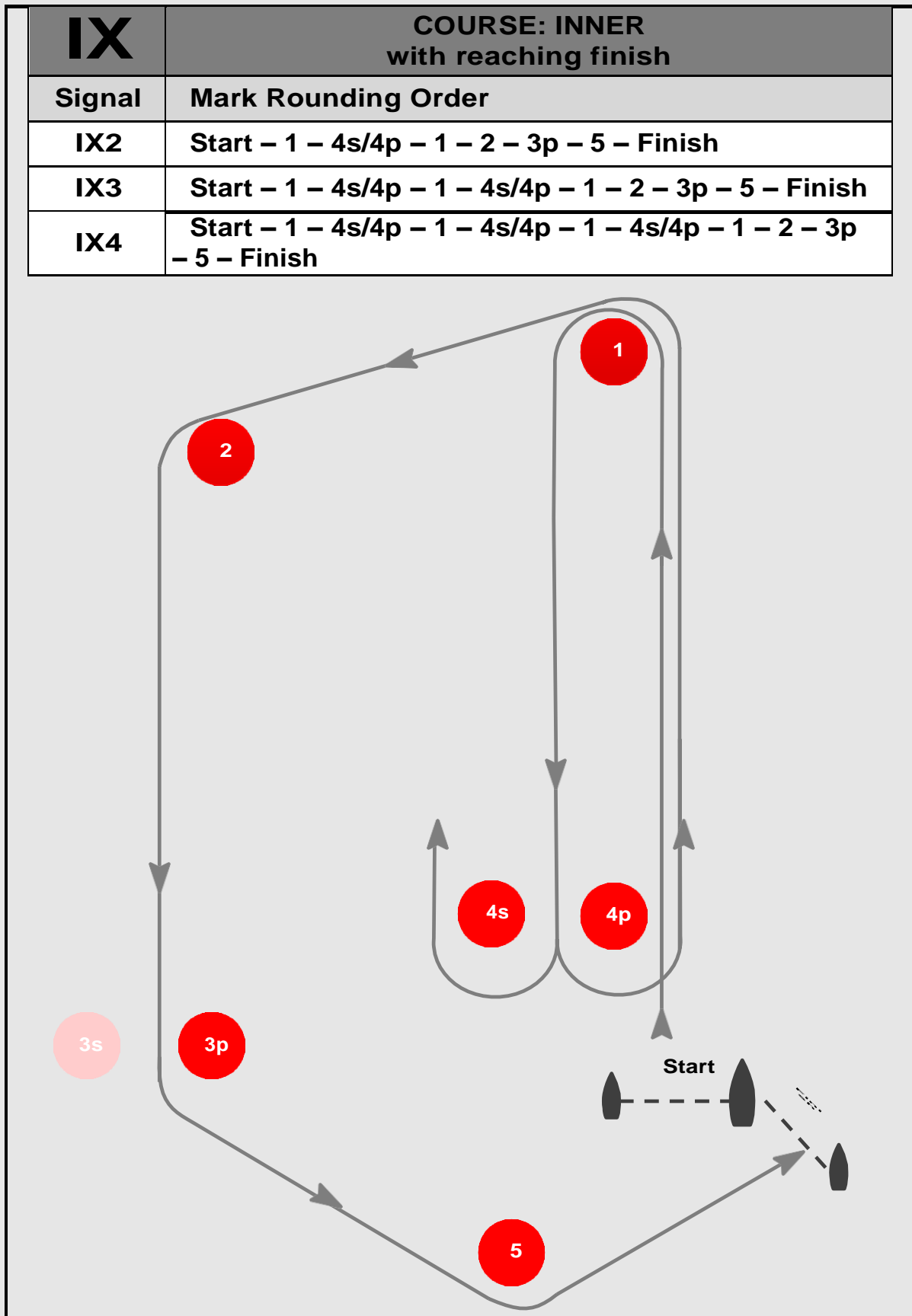


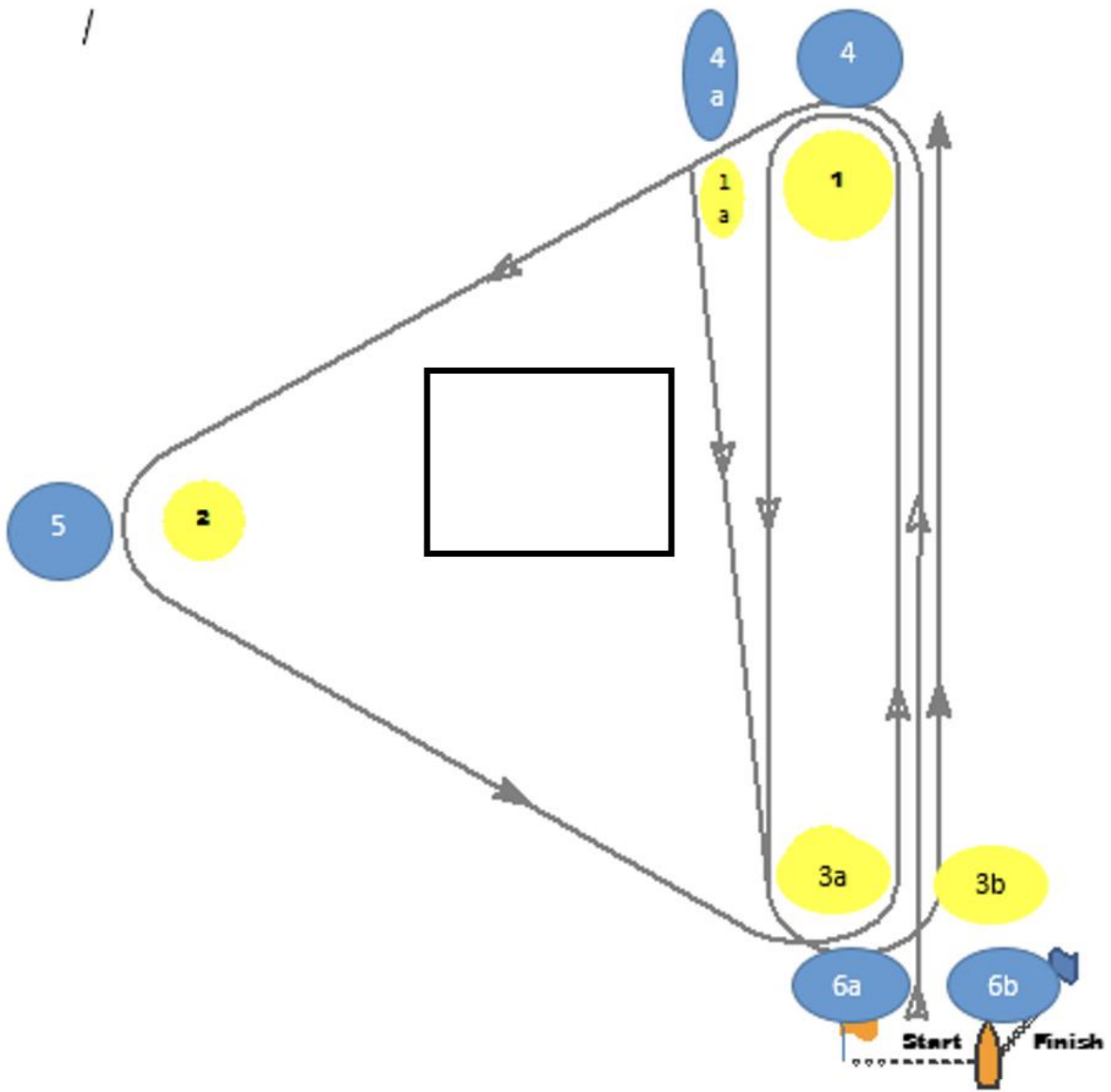
Attachment B

Course Diagrams









Attachment C

Class Flags, Mark Colours and Race Schedule

Class	Class Flag Colour		Saturday 25 th September		Sunday 26 th September	
			Warning	Races	Warning	Races
420	420 insignia		10:55	Up-to 5	10:25	Up-to 4
Optimist	Code Flag O		10:55	Up-to 5	10:25	Up-to 4
Tera	Code Flag E		11:00	Up-to 5	10:30	Up-to 4
Topper	Code Flag T		11:05	Up-to 5	10:35	Up-to 4
Mixed	Code Flag F		11:10	Up-to 5	10:40	Up-to 4
Onboard	Plas Heli Flag		10:55	Up-to 8	10:25	Up-to 6