



# WYA WELSH YOUTH & JUNIOR CHAMPIONSHIPS

REGATTA FLEET

PWLLHELI SAILING CLUB

27 28 APRIL 2013

*The Organising Authority is the Welsh Yachting Association  
in conjunction with Pwllheli Sailing Club*

SUPPORTED BY

sportwales  
chwaraeoncymsu

## SAILING INSTRUCTIONS

### 1. RULES

The regatta will be governed by the rules as defined in *The Racing Rules of Sailing 2013-17*.

### 2. NOTICES TO COMPETITORS

2.1 Notices to competitors will be posted on the official notice board, located in the Event Marquee.

### 3. CHANGES TO SAILING INSTRUCTIONS

Any change to the sailing instructions will be posted 1 hour before the scheduled start time, except that any change to the schedule of races will be posted by 19:00 hours on the day before it will take effect.

### 4. BRIEFING

There will be a competitors briefing at 10.15 am on Saturday in the event marquee adjacent to the club.

### 5. SIGNALS MADE ASHORE

5.1 Signals made ashore will be displayed on the flagstaff on the sand dune adjacent to the launch beach. When a signal is displayed over an area, class, or fleet flag it applies to that area, class, or fleet only.

5.2 The Regatta Fleet may not launch until instructed by the Lead Coach and the Onboard flag is raised. Launching and race times maybe further communicated by the Regatta fleet coaches assigned to this course area.

5.3 Flag L with a sound means: 'A notice to competitors has been posted'.

5.4 When Flag AP is shown ashore race signal AP is changed in that "1 minute" is replaced by 'not less than 30 minutes'. Launching will start approximately 10 minutes after AP is lowered and Onboard flag is raised. This changes race signal AP.



### 6. SCHEDULE OF RACES

6.1 The series will consist of 8 races.

6.2 Races will start at the following times each day (exact racing programme will be clarified on the day):

#### Onboard Regatta

Day	Course	Races (up to a maximum of 10 races)	Time of Warning Signal
Saturday	Regatta	Up to 5 races	Race Training 11:00 Regatta Racing from 13:00pm
Sunday	Regatta	Up to 5 races	Regatta Racing from 10:00am

## 7. CLASS FLAGS

Class flags will be:

Optimist                      Class Flag (O)

Topper                        Class Flag (T)

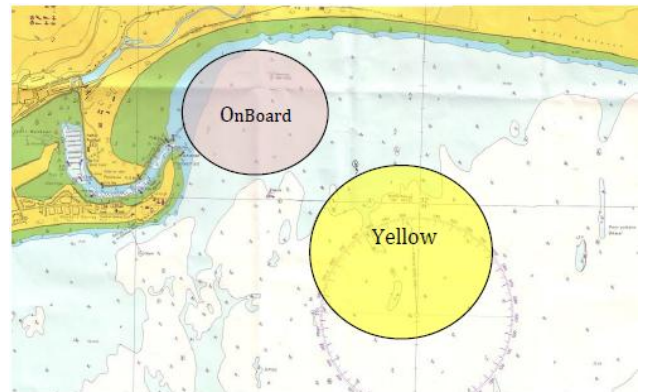
General Handicap        Class Flag: (G)



## 8. RACING AREAS

8.1 The racing areas will be posted on the notice board

8.3 The Onboard Regatta fleet are assigned to the Blue Racing Area.



## 9. THE COURSES

9.1 The courses are described in Appendix A

9.2 Course signals will be displayed on a board on the race committee signal boat. If no signal is displayed the courses shall be as Appendix A.

## 10. MARKS

10.1 Marks will be red inflatable Onboard buoys.

10.3 Starting marks will be a race committee boat at the starboard end (including any buoy, object or boat attached to it for the duration of the starting period), and a boat or buoy with an orange flag at the port end.

10.4 Finishing marks will be a race committee boat and a boat or buoy with a blue flag.

## 11. THE START

11.1 The starts will be started in accordance with RRS Rule 26

Time	Title	Signals
5 minutes	Warning	Class Flag or Numeral Pennant up and 1 sound signal
4 minutes	Preparatory	Either Flag P or Flag I or Black Flag up and one sound signal
1 minute	1 minute period	Either Flag P, I, or Black down and one long sound signal
0 minute	Starting	Class Flag or Numeral Pennant down and one sound signal



11.2 The starting line will be between staffs displaying orange flags on the starting marks or boats.

11.3 Boats whose warning signal has not been made shall avoid the starting area.

## 12. CHANGE OF THE NEXT LEG OF THE COURSE

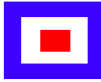
To change the next leg of the course, the race committee will move the original mark (or the finishing line) to a new position, or lay a new mark and remove the original mark as soon as practicable. When in a subsequent change a new mark is replaced, it will be replaced by an original mark.

## 13. THE FINISH

13.1 The finishing line will be between staffs displaying blue flags on the finishing marks or boats.

13.2 A blue flag means that the Race Committee boat is in position at the finishing line.

13.2 Back markers may be given their finish taken on the course by a Race Committee boat displaying Flag W with two sound signals.



Flag W – Finish on course

## 14. TIME LIMITS & TARGET TIMES

Time limits and target times are as follows:

Class	Time limit	Target time
All classes	90 minutes	30 minutes

## 15. ADVISORY & ARBITRATION HEARINGS; EXONERATION PENALTY

15.1 The Exoneration Penalty and the Advisory Hearing and RYA Arbitration Procedures of the RYA Rules Disputes Procedures will be available. See the official notice board for details.

## 16. SAFETY REGULATIONS

16.1 All competitors shall wear a personal flotation device at all times when afloat, except briefly when changing or adjusting clothing or personal equipment. Wet suits and dry suits are not considered personal flotation devices. This changes rule 40.1

### 16.2 Check-out and check-in.

The requirements of this instruction are specified for the safety of competitors.

(a) The tally control point to check-out and check-in competitors will be located between the sand dunes on Pwllheli launch area.

(b) Tallies comprise numbered rubber wristbands. Numbers will be allocated at registration, and posted on the official notice board. Tallies shall be worn visibly, over clothing, on the right wrist by both helm and crew at all times while afloat.

(c) Both helm and crew shall individually check-out before racing by personally collecting their tally.

(d) Both helm and crew shall individually check-in immediately on returning to shore after racing, but no later than the protest time limit, by returning the tally personally to tally control.

(e) The penalty for failure to comply with this instruction will be 5 points added to the boat's series score for each infringement. A list of boats that have infringed will be posted on the official notice board before the protest time limit. This changes rule 63.1.

16.3 A boat that retires from a race shall notify the race committee as soon as possible.

16.4 Boats wishing to sail ashore before the end of the day's racing shall not do so unless authorized by a safety boat. The safety boat will instruct boats in the procedure for returning ashore.

16.5 Boats shall follow the instructions of the safety boats. Infringements will be reported to the race committee, which may protest the boat. Boats penalised under this instruction may be scored DNE, or such other penalty that the protest committee may decide. This changes rule 64.1(a).

16.6 Outside Help: Will be permitted for regatta fleet racing.

**17. REPLACEMENT OF CREW**

17.1 Substitution of competitors will not be allowed without prior written approval of the race committee.

**18. OFFICIAL BOATS**

Official boats will be marked as follows:

Boat	Flag
Safety / Coach fleet	Course area Red flags

**19. TRASH DISPOSAL**

Trash may be placed aboard support or official boats.

The penalty for breaking rule 55, Trash Disposal, is at the discretion of the protest committee (DPI) and may be less than disqualification.

**20. DISCLAIMER OF LIABILITY**

**Risk Statement**

RRS Rule 4 of the Racing Rules of Sailing states: "The responsibility for a boat's decision to participate in a race or to continue racing is hers alone."

Sailing is by its nature an unpredictable sport and therefore inherently involves an element of risk. By taking part in the event, each competitor agrees and acknowledges that:

- a) They are aware of the inherent element of risk involved in the sport and accept responsibility for the exposure of themselves, their crew and their boat to such inherent risk whilst taking part in the event;
- b) They are responsible for the safety of themselves, their crew, their boat and their other property whether afloat or ashore;
- c) They accept responsibility for any injury, damage or loss to the extent caused by their own actions or omission;
- d) Their boat is in good order, equipped to sail in the event and they are fit to participate;
- e) The provision of a race management team, patrol boats and other officials and volunteers by the event organiser does not relieve them of their own responsibilities;
- f) The provision of patrol boat cover is limited to such assistance, particularly in extreme weather conditions, as can be practically provided in the circumstances;

**25. INSURANCE**

Each participating boat shall be insured with valid third-party liability insurance with a minimum cover of £2million per event or the equivalent.

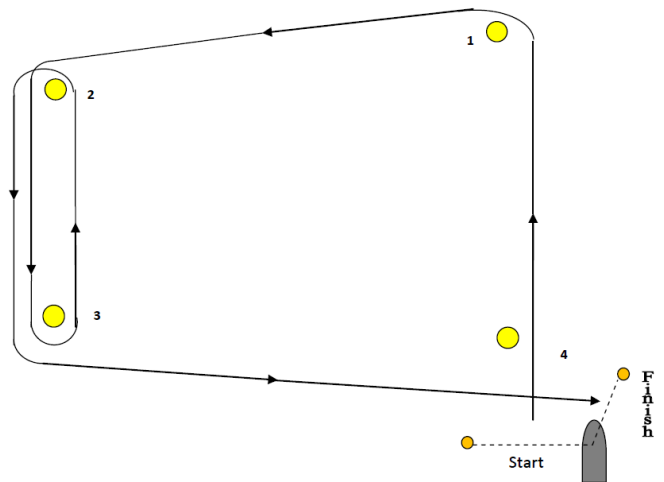
**End.**



# APPENDIX A – ONBOARD REGATTA FLEET COURSE DIAGRAMS

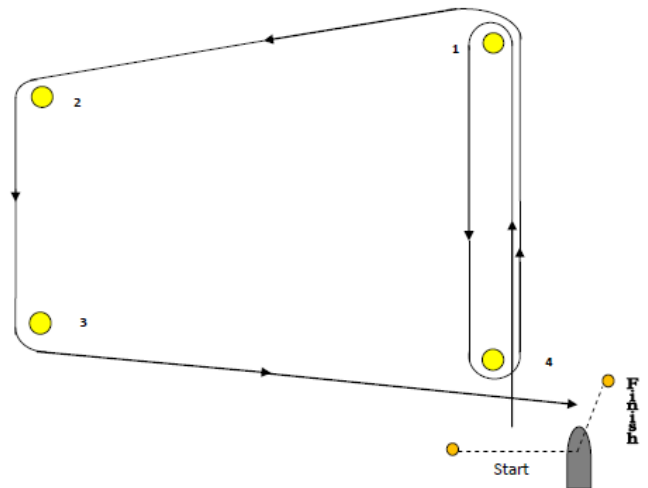
## Course O- Outer Loop

Optimist  
Start-1-2-3-2-3-finish



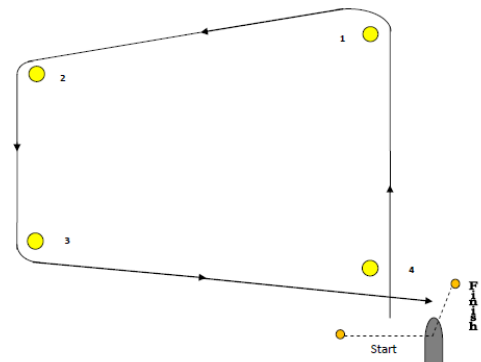
## Course I- Inner Loop

Topper & General Handicap  
Start-1-4-1-2-3-5-finish



## Course B- Box

1 Lap  
Start-1-2-3-finish  
2 Laps  
Start-1-2-3-4-1-2-3-finish  
3 laps  
Start-1-2-3-4-1-2-3-4-1-2-3-  
finish



# The 2013 Volvo Welsh Youth & Junior Championships have been supported by:

## Noddwyr Campwriaeth Volvo Ieuenctid & Iau Cymru 2013:



**FIRMHELM Ltd**  
PWLLHELI BOATYARD

*sportwales  
chwaraeon cymru*

*More and better sailing*



sports council wales  
cyngror chwaraeon cymru